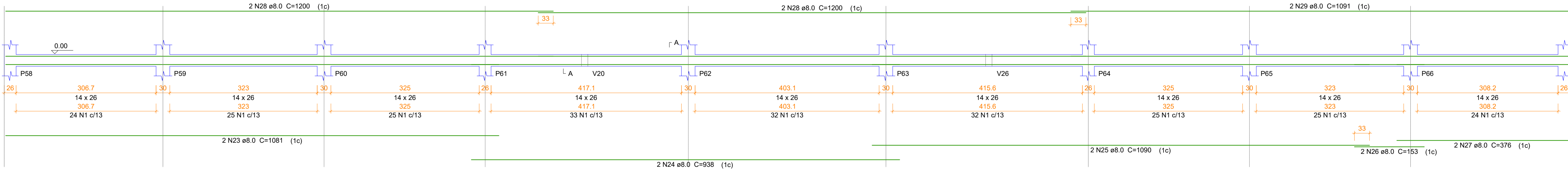
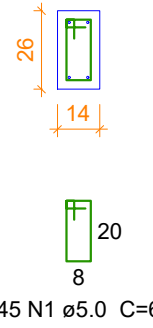


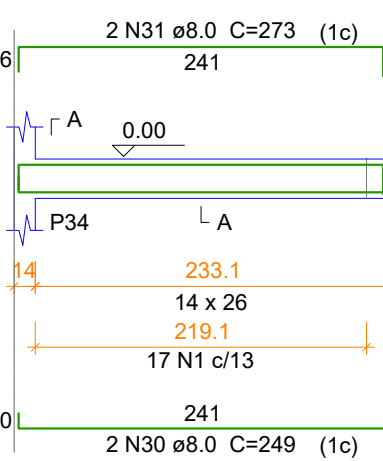
V10
ESC 1:50



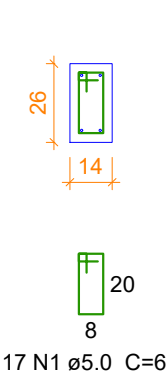
SEÇÃO A-A
ESC 1:25



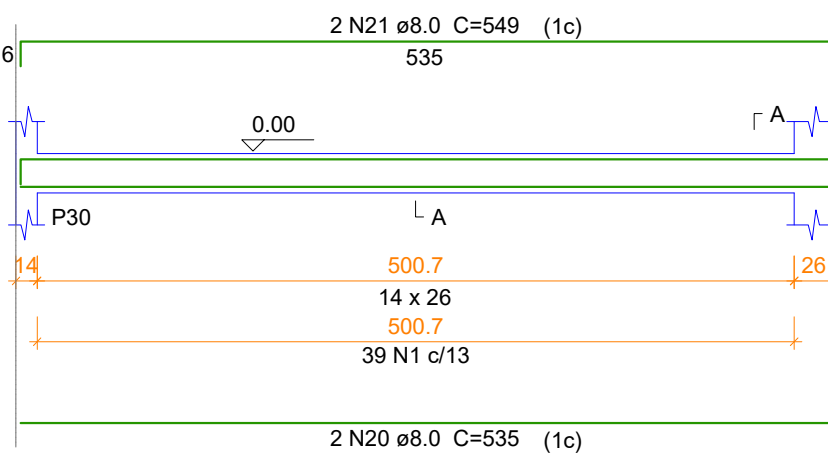
V15
ESC 1:50



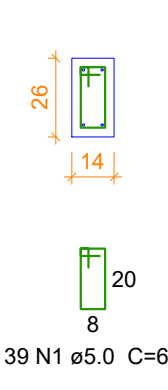
SEÇÃO A-A
ESC 1:25



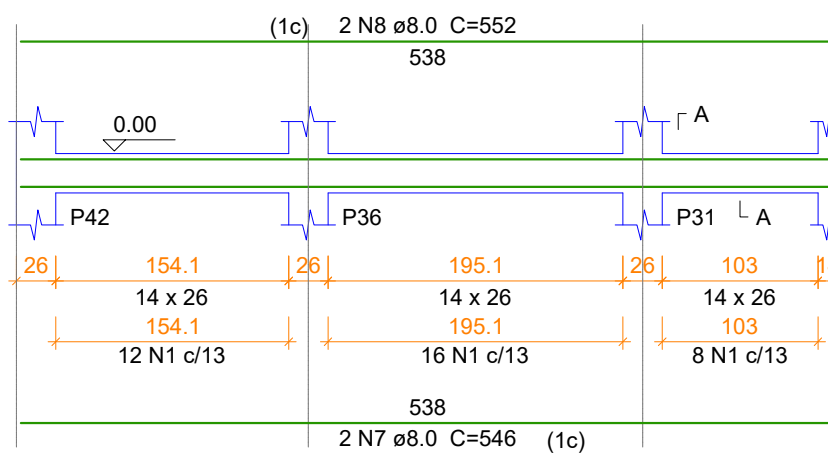
V16
ESC 1:50



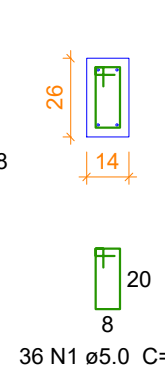
SEÇÃO A-A
ESC 1:25



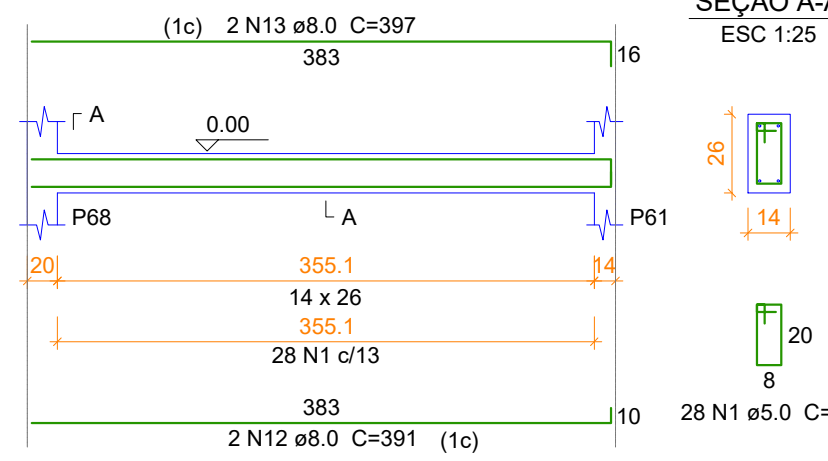
V17
ESC 1:50



SEÇÃO A-A
ESC 1:25



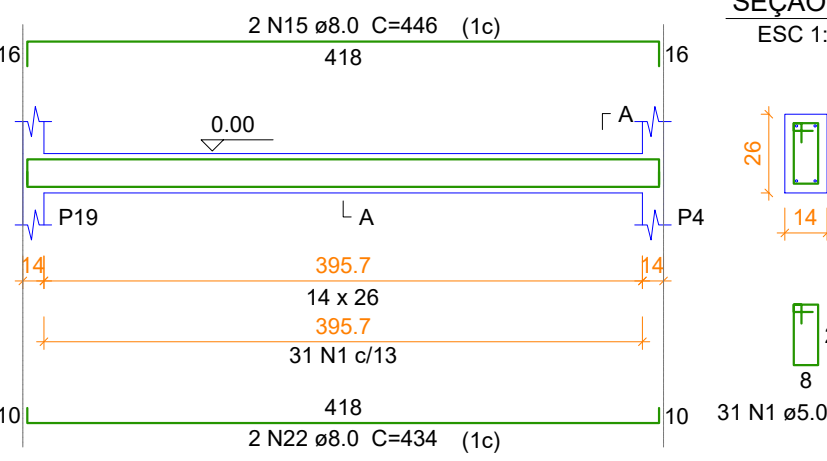
V18
ESC 1:50



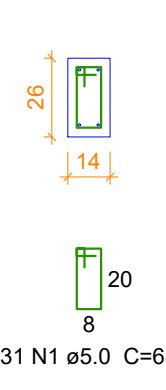
SEÇÃO A-A
ESC 1:25



V19
ESC 1:50



SEÇÃO A-A
ESC 1:25



Relação do aço

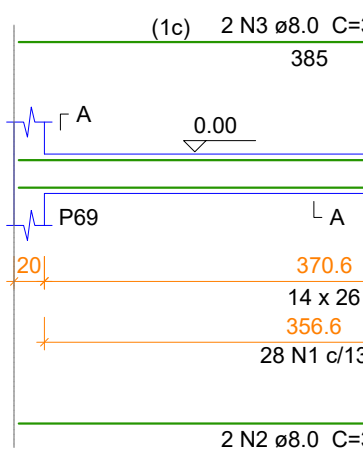
ACO	N	DIAM	Q	UNIT (cm)	C.TOTAL (cm)
CA60	1	5.0	823	68	55964
CA50	2	8.0	4	385	1540
	3	8.0	4	399	1596
	4	8.0	10	418	4180
	5	8.0	2	306	612
	6	8.0	2	312	624
	7	8.0	4	546	2184
	8	8.0	4	552	2208
	9	8.0	2	432	864
	10	8.0	2	374	748
	11	8.0	2	386	772
	12	8.0	4	391	1564
	13	8.0	4	397	1588
	14	8.0	4	426	1704
	15	8.0	6	446	2676
	16	8.0	2	784	1568
	17	8.0	2	796	1592
	18	8.0	2	776	1552
	19	8.0	2	782	1564
	20	8.0	2	535	1070
	21	8.0	2	549	1098
	22	8.0	2	434	868
	23	8.0	2	1081	2162
	24	8.0	2	938	1876
	25	8.0	2	1090	2180
	26	8.0	2	153	306
	27	8.0	2	376	752
	28	8.0	4	1200	4800
	29	8.0	2	1091	2182
	30	8.0	2	249	498
	31	8.0	2	273	546

Resumo do aço

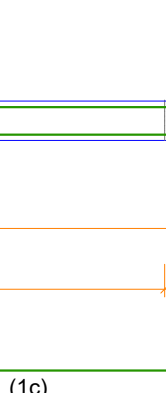
ACO	DIAM	C.TOTAL (m)	PESO + 10 % (kg)
CA50	8.0	474.8	206.1
CA60	5.0	559.7	94.9
PESO TOTAL			
CA50	206.1		
CA60	94.9		

Vol. de concreto total (C-25) = 4.23 m³
Área de forma total = 76.71 m²

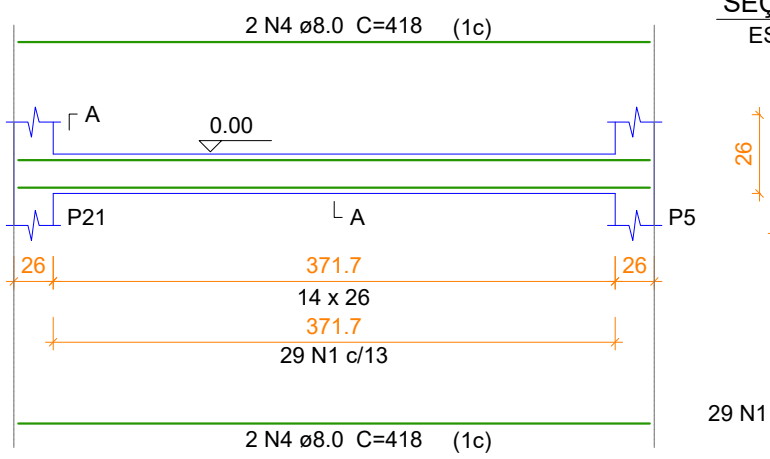
V20
ESC 1:50



SEÇÃO A-A
ESC 1:25



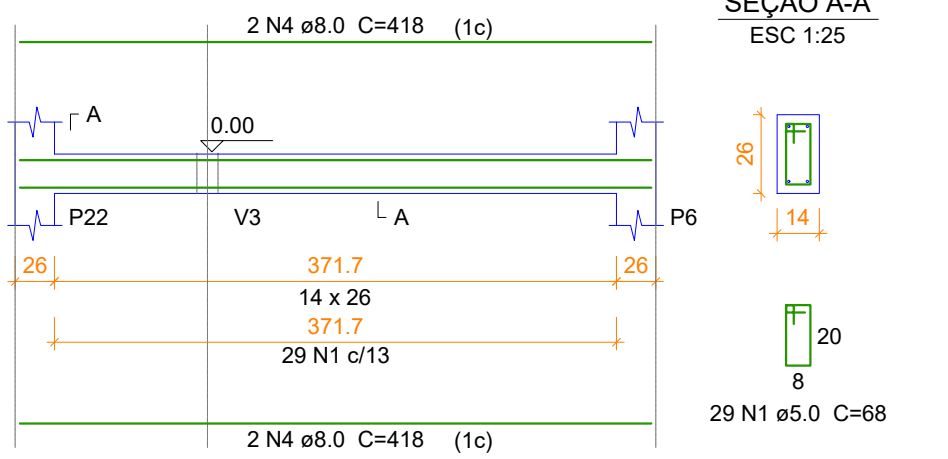
V21
ESC 1:50



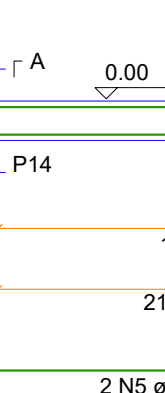
SEÇÃO A-A
ESC 1:25



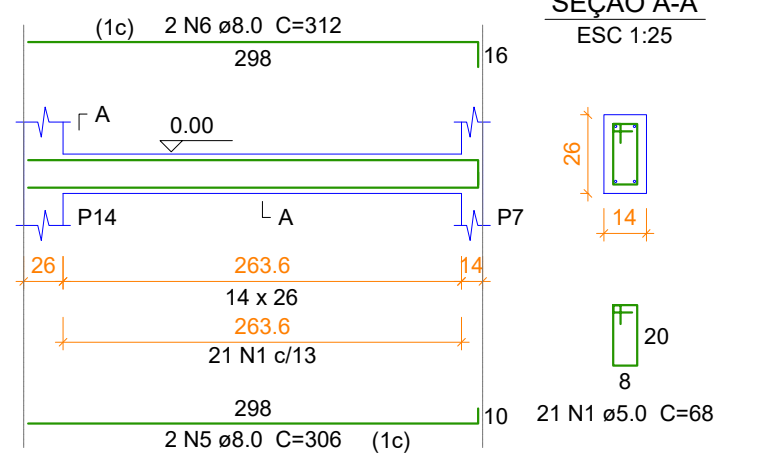
V22
ESC 1:50



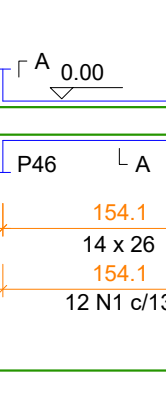
SEÇÃO A-A
ESC 1:25



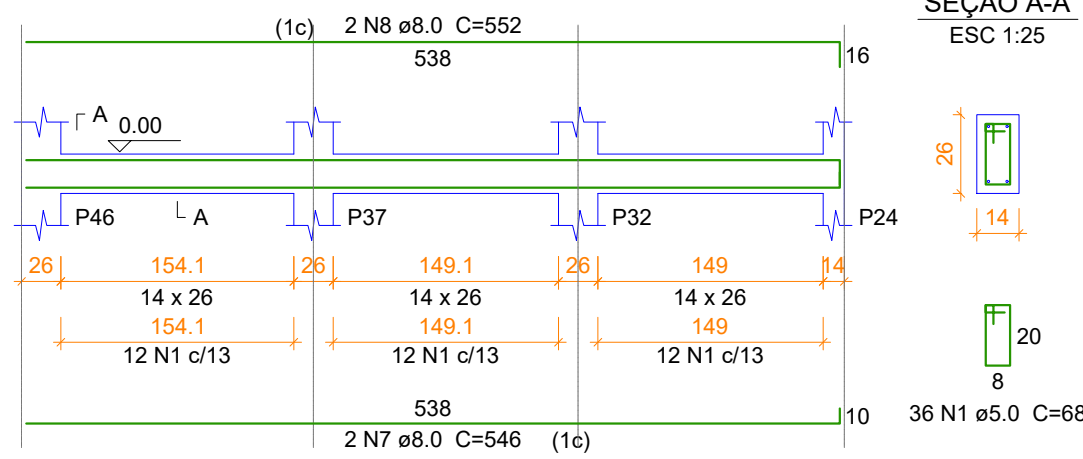
V23
ESC 1:50



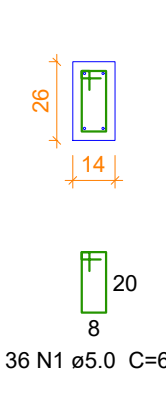
SEÇÃO A-A
ESC 1:25



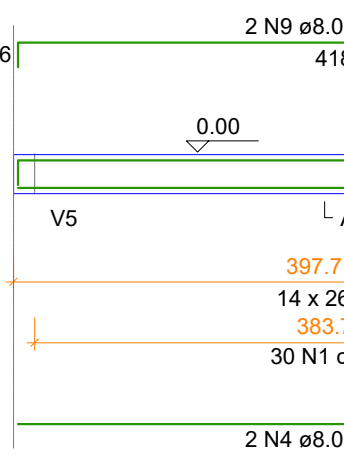
V24
ESC 1:50



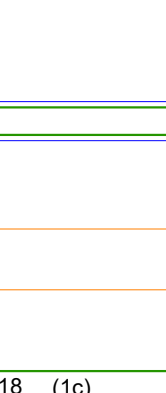
SEÇÃO A-A
ESC 1:25



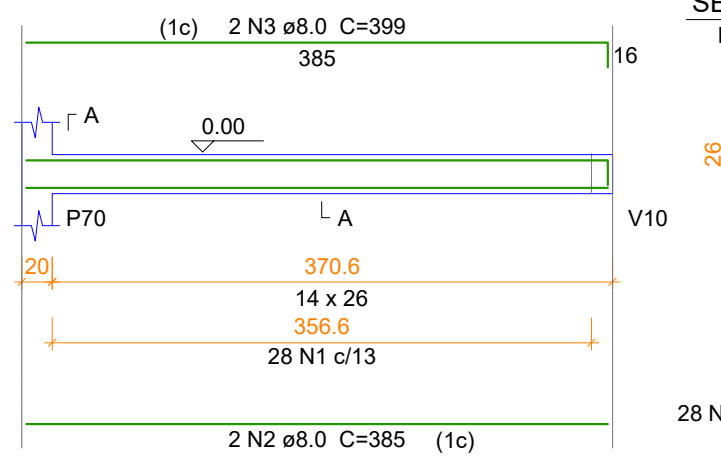
V25
ESC 1:50



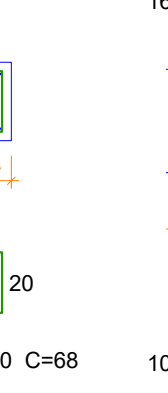
SEÇÃO A-A
ESC 1:25



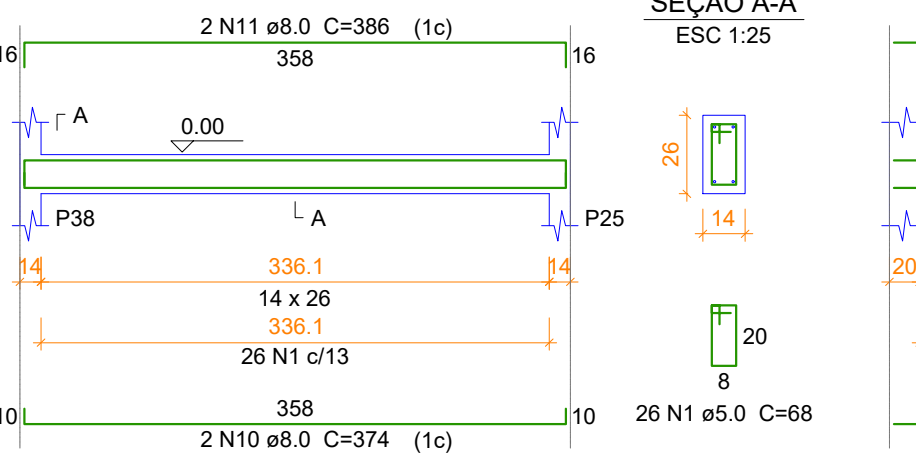
V26
ESC 1:50



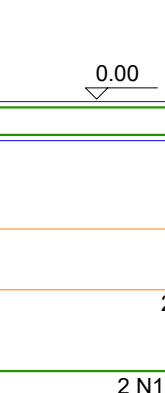
SEÇÃO A-A
ESC 1:25



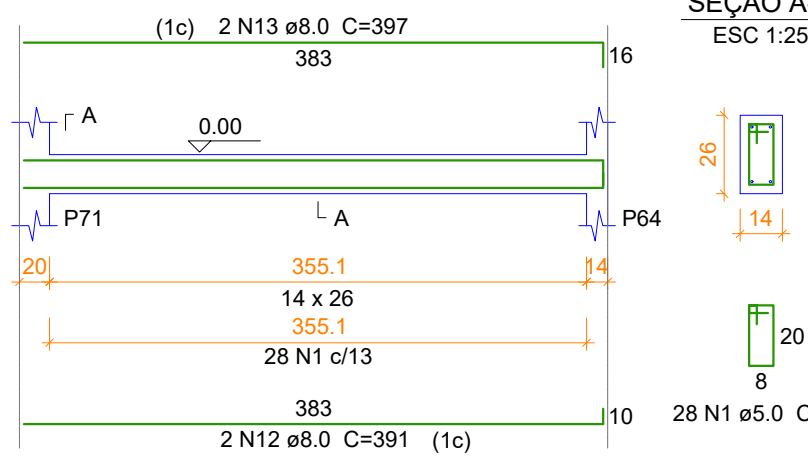
V27
ESC 1:50



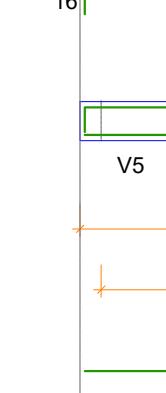
SEÇÃO A-A
ESC 1:25



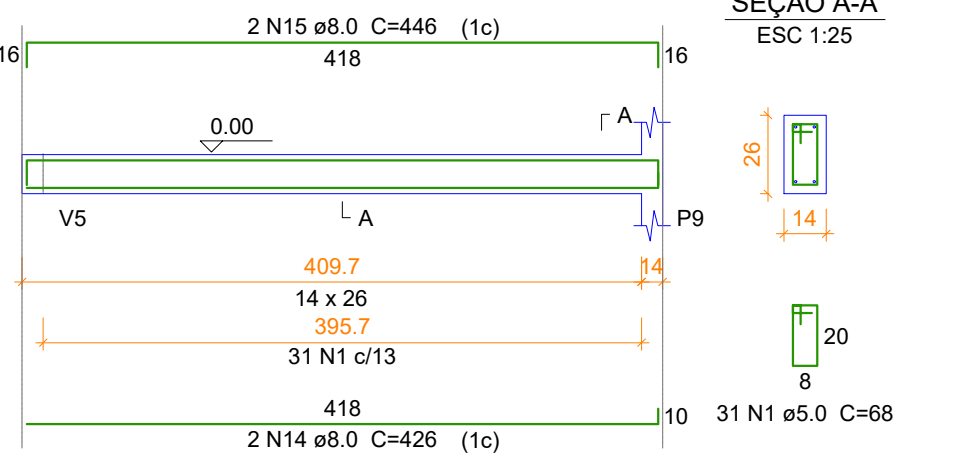
V28
ESC 1:50



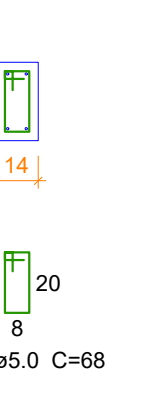
SEÇÃO A-A
ESC 1:25



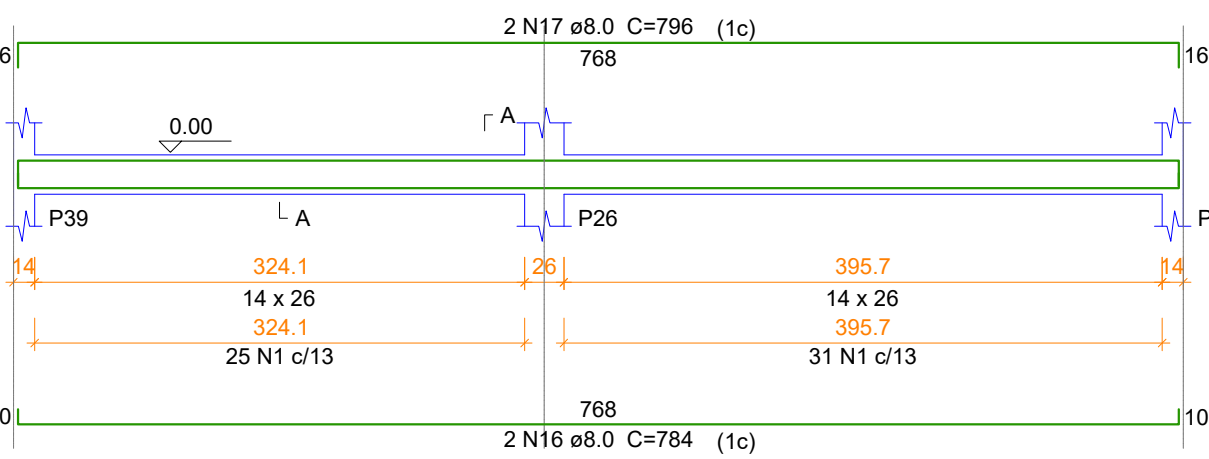
V29
ESC 1:50



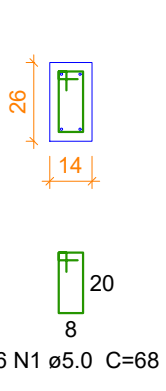
SEÇÃO A-A
ESC 1:25



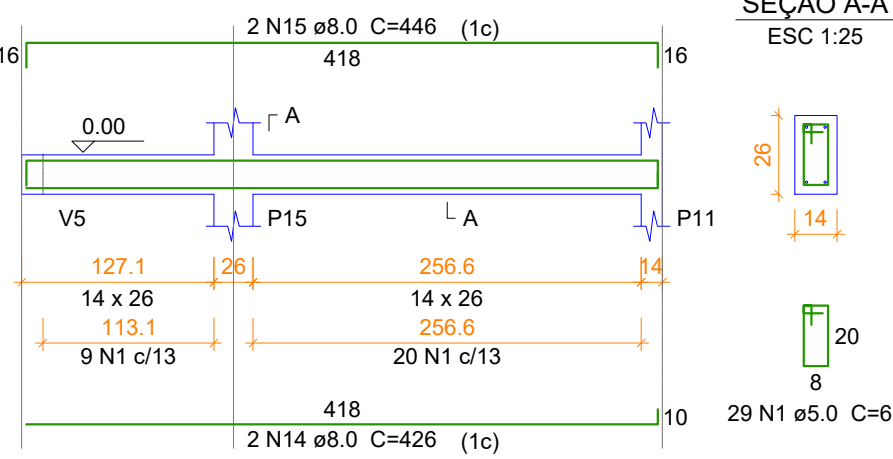
V30
ESC 1:50



SEÇÃO A-A
ESC 1:25



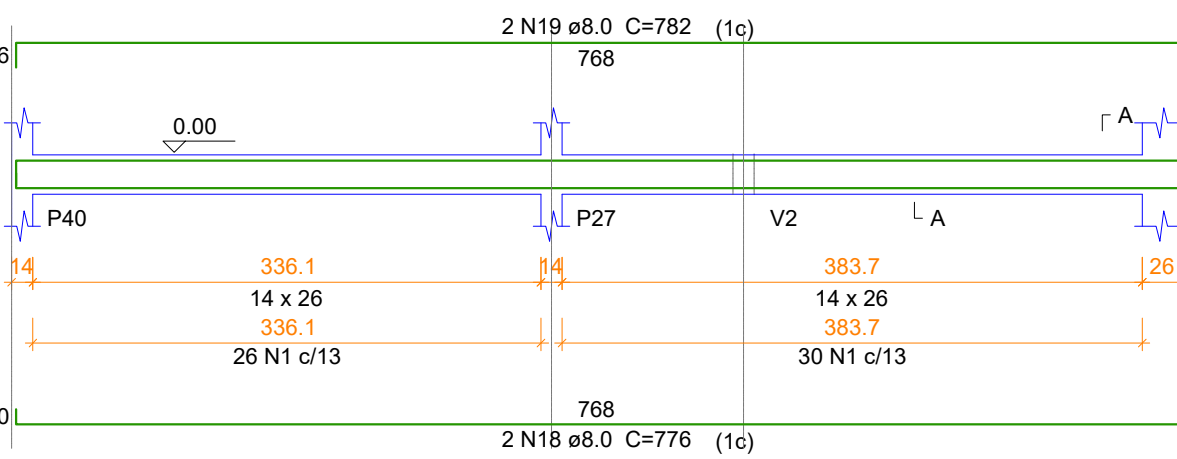
V31
ESC 1:50



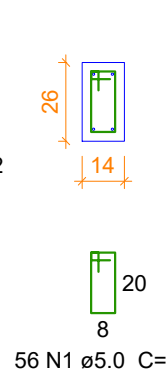
SEÇÃO A-A
ESC 1:25



V32
ESC 1:50



SEÇÃO A-A
ESC 1:25



PROJETO ESTRUTURAL



PREFEITURA MUNICIPAL
TRÊS BARRAS DO PARANÁ

OBRA:	AMPLIAÇÃO CENTRO DE EVENTOS MUNICIPAL	DESENHO:	CAMILA THEISEN
EMPRESA:	PROLONGAMENTO AVENIDA SÃO PAULO, SN.	DATA:	JULHO/2025
CONTEÚDO:	DETALHAMENTO DE VIGAS - VIGA BALDRAME (02/03)	PRONÓIA:	08/18
PROPRIETÁRIO:	PREFEITURA MUNICIPAL DE TRÊS BARRAS DO PARANÁ		